

Work in progress – please do not quote without
permission.

Health and Environment **Existential Field (WP1.4)** **(KATARSIS Project)**

Richard Kimberlee,
Derrick Purdue and
Judy Orme

Roskilde, Denmark, March 2007

Overview of presentation panel

Presentations:

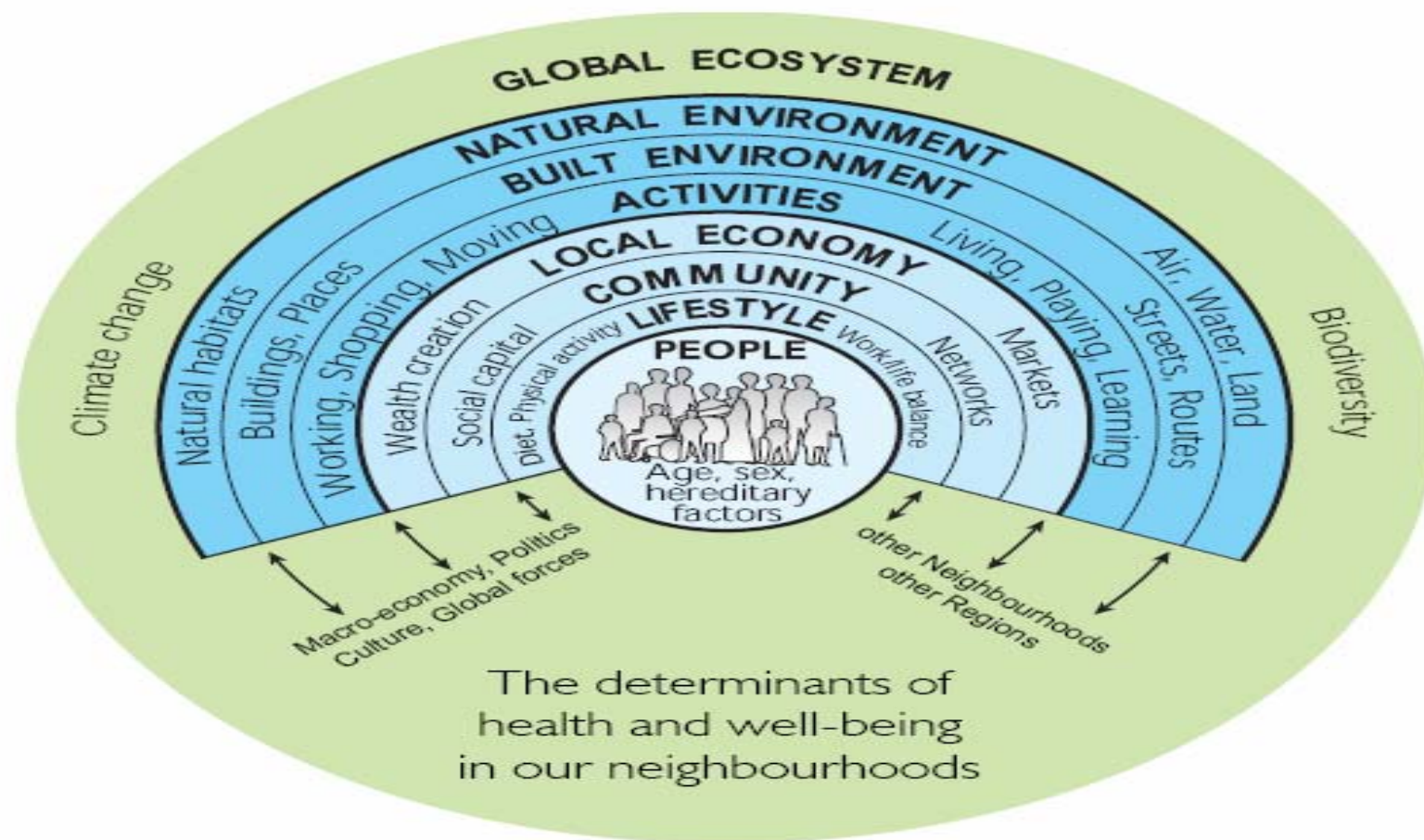
- **Health and Environment – Overview WP 1.4**
Richard Kimberlee,
Derrick Purdue & Judy Orme
(UK)
- **Iberian Healthy Schools Project**
Eduardo Henriques (Portugal)
- **Long term excluded populations**
Janos Ladanyi (Hungary)
- **Civil society/ state/ third sector relationship**
Juan-Luis Klein (Canada)

Contact	Area of expertise	Person	Outcome
Sparring partner: Email contact on-going	Community health experiences + Quebec model informed by community participation & co-governance.	Juan-Luis Klein UQAM	Comparative study of Quebec and England.
Expert input: Email contact on-going	Health problems and care for migrant populations	János Ladányi Budapest University of Economics,Hungary	Discussion about the wider implications of the 'Health Inequalities at the Gypsy and the non-Gypsy Pour in Hungary during the Market Transition'
Expert input: Email contact on-going	The integration of health and social policies; territorial development of health agencies; human resources in health care services	Tommaso Vitale, Italy	-Contracting for Welfare Services in Italy -Effective incentives in critical situations- specific focus on how monetary + non-monetary incentives affect health care systems in Serbia and Albania.
Expert input: Face to face meeting	Urban Designer and Transport Planner, adviser to EU Shared Space project.	Ben Hamilton-Baillie, UK	Health impacts on shared space development. Networked into European Shared Space initiatives
Expert input: Face to face meeting	Car free and cyclist activist.	Steve Melia, PhD student, UWE, UK	Provided data on the car free development in Freiberg, Germany.

Contact	Area of expertise	Person	Outcome
Expert input: Face to face meeting	Completed PhD student, UWE	Ralph Mackeridge, student, Faculty of Built Environment UWE, UK.	Case study focused on local food networks and policy discourses.
Expert input: Email contact	Social services, welfare benefits	Eduardo Brito Henriques, Portugal.	Contribution to our summary paper.
Expert input: Steering group meeting	Public health; EU links; WHO Healthy Cities; Urban planning;	Selena Gray Paul Pilkington, Hugh Barton, UWE WHO Centre	Discussion of overall framework for Health and Environment section with clear links to other EFs.
Expert input: Email contact on-going	Urban Designer specialising in public space	Sari Wallberg and Sara Hesse, Tyrens, Sweden.	Impact of shared space initiatives in Europe
Expert input: Face to face meeting	Visiting lecturer in political economy at University of London	Derek Wall	Advice on environmental socially creative strategies.
Expert input: Face to face meeting	Director of Liveable Neighbourhoods and Carbon Programmes.	Peter Lipman,	Adviser on Home Zone projects.

How do we map the territory to contribute to a 'state of the art' review?





Health and Environment nexus

Social creative strategies addressing social exclusion:

Shared Space

Food Networks

Dimensions of Social Exclusion (Inequalities in health)

- Life expectancy varies with economic status
- Risk behaviour related to economic status
- Inequalities will increase
- NMS inequalities vary
- Personal well being
- Rate of improvement

Dimensions of Social Exclusion (Inequalities in service provision across nation-states)

- Not all nation states provide universal systems
- Access to health systems vary
- Access to hospital care
- Health spending varies from 3.5% to 11.2% of GDP
- Service provision varies
- Dissatisfaction with service provision grows

Triggering factors leading to health service reform

Demographic

Globalisation

Labour market reform

Political and social responses

Complex governance arrangements

(Henman and Fenger, 2006)

Third sector/ 'shadow state'

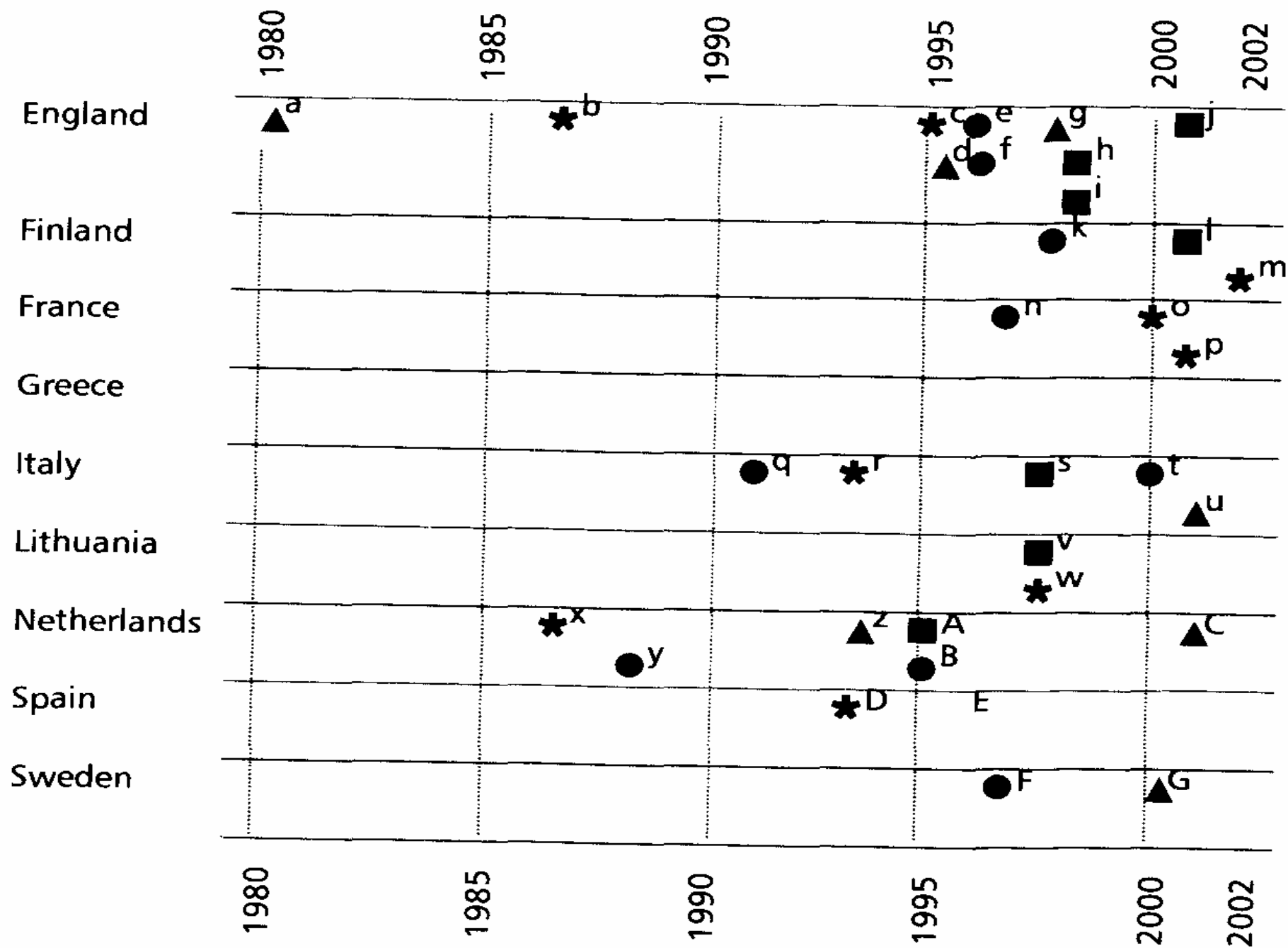
(Milligan and Conradson, 2006)

Authenticity of knowledge (Giddens, 1991)

Scepticism of expert efficacy (Beck, 1992)

Member state policy responses to health inequalities

- high profile independent reports recommending research or policies on health inequality
- national research programmes on health inequalities
- government advisory committees recommending policies to reduce health inequalities
- co-ordinated government action to reduce inequalities



Innovative approaches for tackling socio-economic inequalities in health

Policy steering mechanisms

Labour market and working conditions

Health related behaviours

Health care

Territorial (ABI) approaches

Vulnerable Road User death and injury

- 3000 people killed everyday on the road
- Road deaths are set to rise by 80% by 2020
- Every 3 minutes a child is killed
- Road crashes are the biggest killer of young people in EU and US

www.makeroadssafe.com

- In UK each KSI cost £65,000 (95,900 euros)
- *a child injury epidemic* in Europe (Vincenten, 2006)

European children's death and injury is associated with:
poverty,
single parenthood,
low maternal education,
low maternal age at birth, poor housing,
weak family ties, and parental drug or alcohol abuse
(UNICEF, 2007:1.16).

After accidents communities and surviving families endure:
years of emotional trauma
particularly harrowing when a child or young person is killed
(Wenham-Clarke, 2006),
but such events are but the tip of
an iceberg of trauma and disability
(UNICEF, 2007: p1.16).

Dynamics of Social exclusion: Young vulnerable road user

- Adult motorists key stakeholders
- Industry and motorist organizations
- Excluded from public roads
- Confined to pedestrians and public transport
- Increasingly excluded from public space
- Increasingly excluded from convivial engagement with peers
- Risk compensation (John Adams)

Community reactions

- Critical mass events...last Friday of the month
- Angry residents
- David Engwicht...*Creative Communities International*





Anti-speed protests, (Road Witches/Folk Traffic Calming), Oxford, UK.





Shared space

- Hans Monderman
- Home zones
- Hamilton Baillie
- The Dings
- There are many others etc

Skvallertorget (Sweden)



Oosterwolde, Freisland (Holland).



Woonerf - Rijsvijk, The Netherlands



Formal organisations in the third sector

- Streets Alive (UK)
- Auto-aholics Anonymous (EU and US)
- Car free days (EU, Can and US)
- Inventions (cycling tubes, Vancouver, Can)
- Bicycle Free Coalition

Statutory sector partner or led: socially creative strategies

- Target setting
- National Cycle Networks (UK)
- Car free communities: Freiburg (Germany)
- Shared space schemes Europe
- The Dings, Bristol, UK.



Socially Creative Strategies: Social Movements

- *'A direct action network for global and local social-ecological revolution(s) to transcend hierarchical and authoritarian society, (capitalism included), and still be home in time for tea'..... Reclaim The Streets*
- *'The general principles behind Earth First! are non-hierarchical organisation and the use of direct action to confront, stop and eventually reverse the forces that are responsible for the destruction of the Earth and its inhabitants. Earth First is not a cohesive group or campaign, but a convenient banner for people who share similar philosophies to work under.'.....Earth First*

Earth First: M3, Twyford Down, UK





Local Food Networks in a Global Food System

- The Theoretical Literature
 - Global Food System (Exclusionary Dynamics)
 - Alternative Agro-Food Networks (Socially Creative Strategies)
- Empirical Examples
- Engaging Governance

Global Food System

- Industrial Agriculture and Fordism
- Post Fordism and Emerging Global System
 - Global Reach of Supermarket Chains
- International Regulation
 - WTO , Codex, Euro Patent Office
 - GM Food and Intellectual Property
 - EU, subsidies and flexible market

Local Food Networks

- What is Local Food
 - Outside the market
 - Alternative farmers
 - Agreements on local supply
- Discourses of the Local and Global
- Opposition to Globalization
 - Defensive Localism?
- Opposition In Global forms
 - Free Trade to Fair Trade
- Campaigning NGOs
 - Food Miles
 - Engaging with Global Governance

GRAIN

- European base in Barcelona
- Global Civil Society
- Campaigning and Research
 - GM Food
 - Farmers Rights to genetic resources (seeds)
 - Knowledge: farmers vs scientists





SCIENCE
FOR THE PEOPLE
NOT FOR TNC'S
IARRI OUT!

Hartcliffe

Health and Environment Group

- In deprived neighbourhood in South Bristol
 - Community engagement with environmental issues locally - exercise, access to countryside, healthy food
 - Food Co-op (lack of retail supply)
 - Community Garden
 - Cooking and training



HHEAG 2006



HHEING 2006

Empirical Examples

- Sho Nirbhor (self reliance) Bradford
 - Bangladeshi women growing vegetables for exercise, social contact and confidence to engage with communities
- Sustain: Framing national debate / food miles
- Somerset Food Links: Service development for local growers and traders, and local partnership

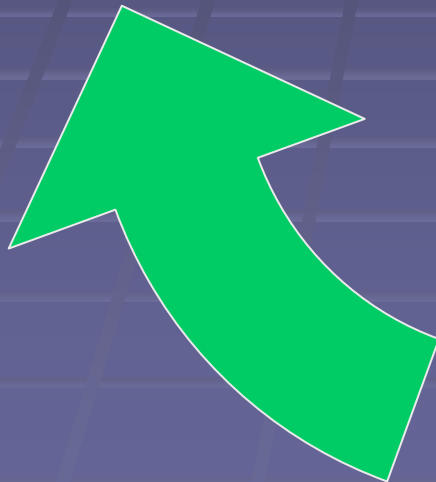
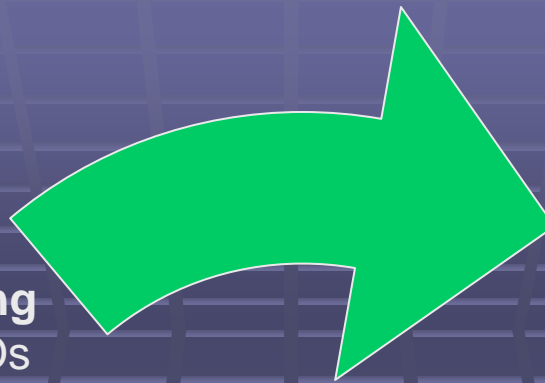


Agenda Setting
Specialist NGOs
Frame problems / solutions

Evaluation
Research (Universities)
Monitoring outcomes

Coalition Building
Civil Society Orgs
Public agencies
Policy Development
Bargaining
Decision Making

Alternative creative
innovators
(Local practitioners)
Implementation
Mainstream
(Local as brand)



Engaging Governance

- Local Governance
 - Re-defining the local in policy discourse
 - Local partnerships
 - Policy cycles: actors and roles
- Global Governance
 - NGOs and global social movements
 - Framing debates and policy cycles
 - Shifting centres of hegemonic power